

THE  
**CORMO**  
BREED



'DUNGROVE', BOTHWELL, TASMANIA, AUSTRALIA 1977



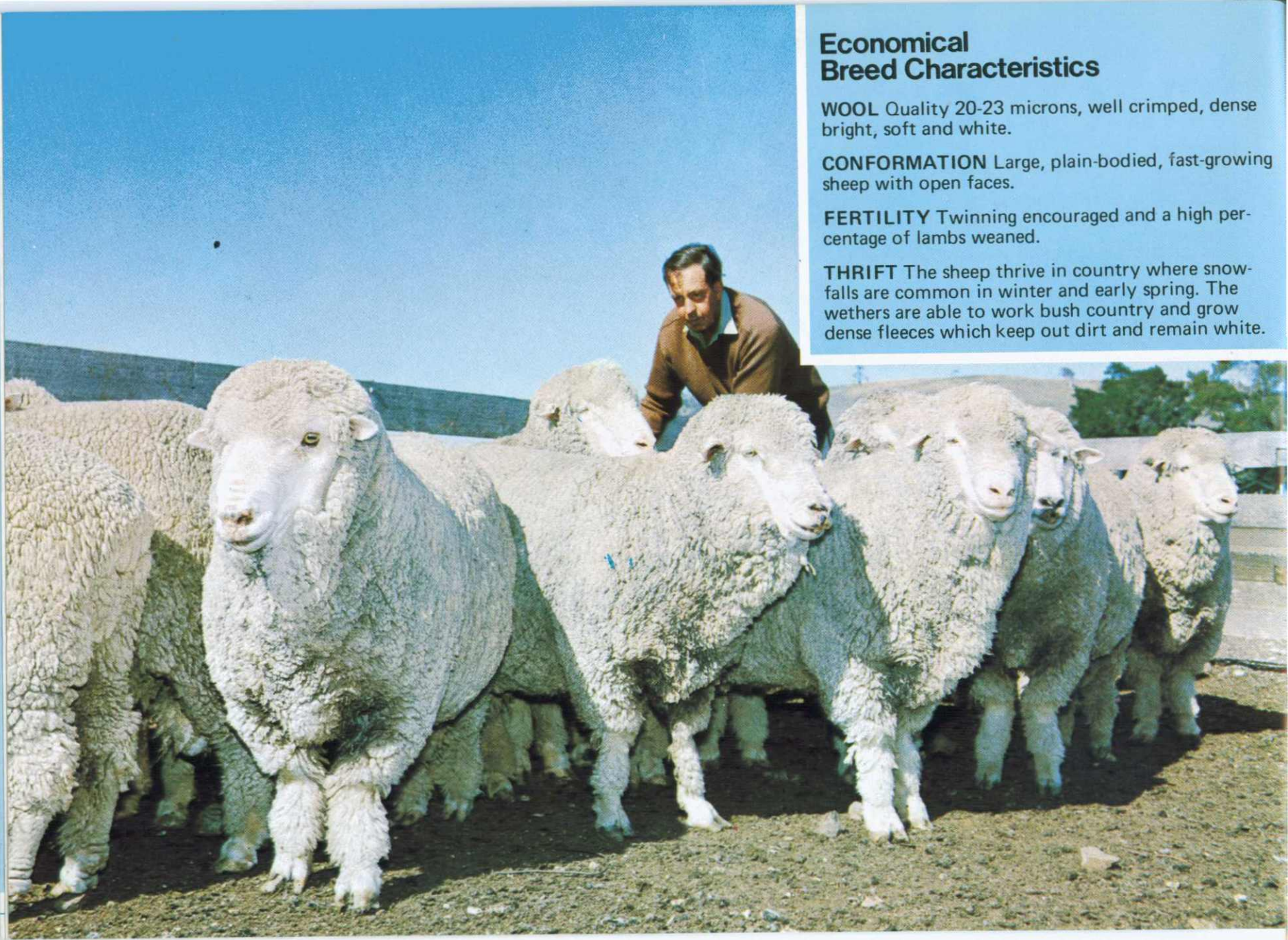
## Economical Breed Characteristics

**WOOL** Quality 20-23 microns, well crimped, dense bright, soft and white.

**CONFORMATION** Large, plain-bodied, fast-growing sheep with open faces.

**FERTILITY** Twinning encouraged and a high percentage of lambs weaned.

**THRIFT** The sheep thrive in country where snowfalls are common in winter and early spring. The wethers are able to work bush country and grow dense fleeces which keep out dirt and remain white.





# Foundation

Stud Corriedale rams from 'Fairfield' Cressy, Tasmania, were crossed with 1,200 Superfine Saxon Merino ewes descended from the parent Saxon Merino Stud at 'Winton' Campbell Town, Tasmania.

The resultant progeny that met the required standards were used to form a ram breeding nucleus. This was a flock closed to the introduction of rams from outside, and established within a larger flock of the same type of sheep.

**SELECTION WAS, AND STILL IS, BASED SOLELY ON MEASURED PRODUCTION OF ECONOMICAL CHARACTERISTICS.**

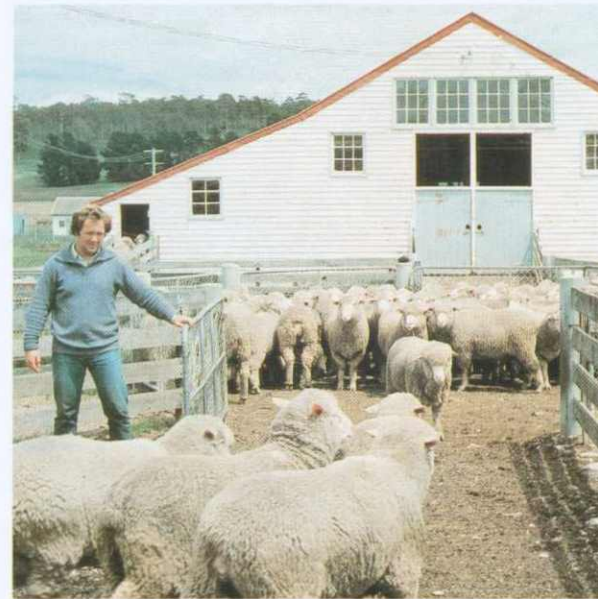
← Rams — 3 years old.



*Twin Lambs.*



*Nucleus ewes.*



*Rams — 1 year old.*



*Typical Cormo heads.*





*The Homestead at 'Dungrove', Bothwell.*



# Home of the Cormo

'Dungrove', one of Tasmania's larger 'highland' properties, is owned by Mr I. K. Downie. It is in the Bothwell district, approximate latitude 42°S, and about 610 metres above sea level.

The property comprises 5,000 hectares, half of which is improved with Tasmanian strain No. 1 Ryegrass, subterranean and white clover. The remainder consists of foothills and timbered mountains.

Another area 305 metres higher, is used for summer grazing.

Climatic conditions, by Tasmanian standards, can be severe. The Winters are cold and frosty and the Summers dry. Spasmodic snowfalls occur in Winter and early Spring. Rainfall averages 533 millimetres (21 inches) a year.

In 1969, 'Dungrove' won State and regional awards in a Tasmania-wide stock feeding competition. This is a contest in which points are awarded for the quality and management of pastures, forage crops, and in which the judges also consider how the use of these feeds is reflected in the condition of the stock.







**DONICORMO**

fabric is made entirely from Cormo wool. Because of the evenness of the clip due to selection within a 21-23 micron range, Toyobo Mills of Japan paid a premium price for the entire clip, unclassified, and made the DONICORMO fabric.



# The Cormo Breed Society

The Cormo Breed Society was formed in 1975 with the following Committee.

*President:*

Mr I. K. Downie – Founder of the breed

*Vice-President:*

Mr F. Grimwade – 'Glenaroua Homestead', Broadford, Victoria

*Secretary:*

Mr I. Aberdeen – Church St, Kilmore, Victoria

*Committee Members:*

Mr A. Hamilton, 'Kincora', Tallarook, Victoria  
Mrs I. K. Downie, 'Dungrove', Bothwell, Tasmania

*Breed Inspector:*

Mr A. Busse, 'Glenaroua', Broadford, Victoria

There are ten pure Cormo flocks in Tasmania, Victoria and Western Australia.

The number of Cormo-cross sheep in Australia exceeds 500,000.

The adaptability of the sheep has been shown by satisfaction of breeders in both high and low rainfall areas.

## Export

Because of the scientific method of breeding the Cormo, inquiries are continually being received from many countries of the world who wish to make progress in their breeding of sheep.

People's Republic of China: Following the successful exhibition of 2 Cormo rams at the Pekin Trade Fair in 1974, an order for 40 top-producing ewes and 10 nucleus rams was successfully negotiated in 1975.

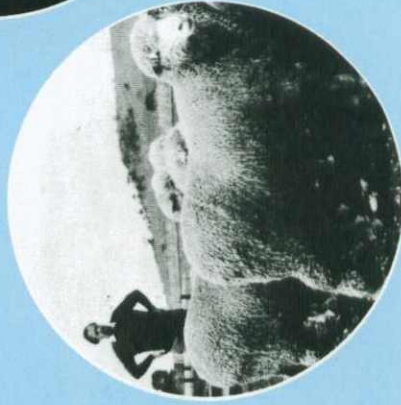
U.S.A.: Mr Travis Jones, of Montrose, Colorado has begun a Cormo Ram Breeding Project after purchasing 12 ewes and 2 rams, both from the nucleus. This Cormo project will be run in conjunction with his own Columbia Sheep Stud.

Argentina: Seven Cormo rams have been used by artificial insemination in a ram breeding flock which provides sires for 65,000 breeding ewes.

Cormo wool, having been bred on objective measurement, is now proving its superiority because 90% of the wool falls within the one micron range.



*Cormo Ewes*



For further information/brochure contact:

Mr I. K. DOWNIE  
'Dungrove',  
Bothwell,  
Tasmania 7411  
Australia

Printed by Mercury-Walch